

88 Vivian Way

SAN RAFAEL, CA 94901



Proposed Development



Site Description

- > 104,544 square feet of land - 2.4 acres
- > Dimensions - 663 feet by 163 feet
- > Frontage on Vivian Way and Belvedere Street
- > Currently improved with a 37,800 square foot commercial building & 70,000 square foot surface parking lot
- > Lease to Country Club Bowl through 11/13/14

Mixed-Use Development Potential

- > 78 residences encompassing 94,700 saleable square feet
- > 13,580 square feet of commercial space
- > 188 surface parking spaces
- > 3-stories on grade

Location

- > Situated in San Rafael's Eastern Waterfront Mixed-Use Neighborhood
- > Marin County median home prices - \$746,750
- > Easy access to public transportation & Highways 580 & 101

Downtown San Rafael



FRANK WHEELER
415 288 7816
frank.wheeler@colliers.com
DRE # 00831700

TONY CROSSLEY
415 288 7807
tony.crossley@colliers.com
DRE # 00900574

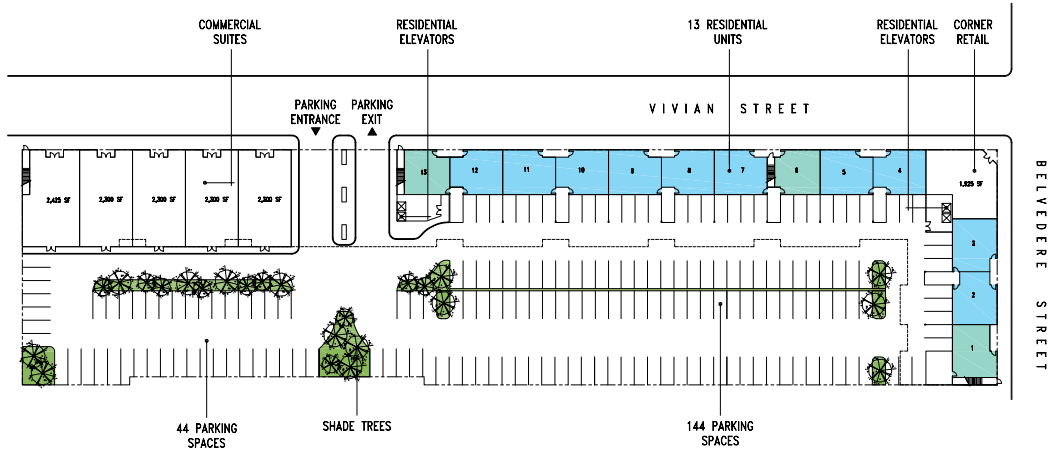
COLLIERS INTERNATIONAL
50 California Street, Suite 1900
San Francisco, CA 94111
colliers.com

88 Vivian Way

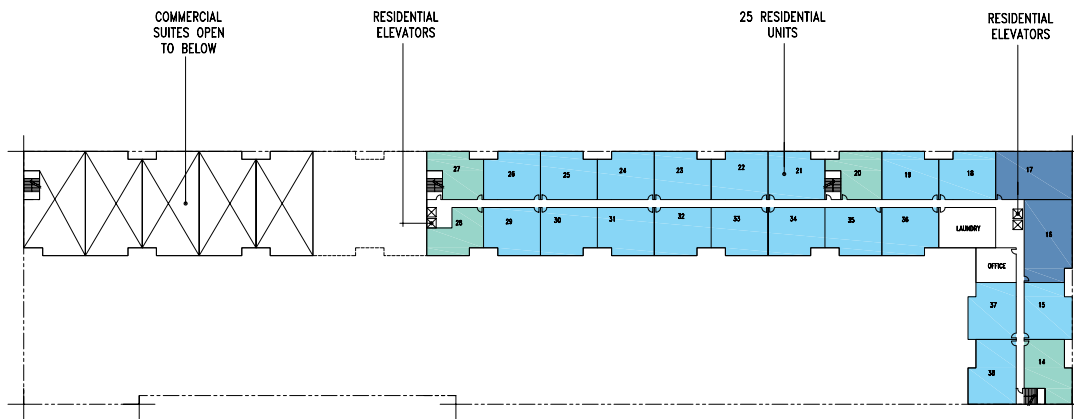
SAN RAFAEL, CA 94901



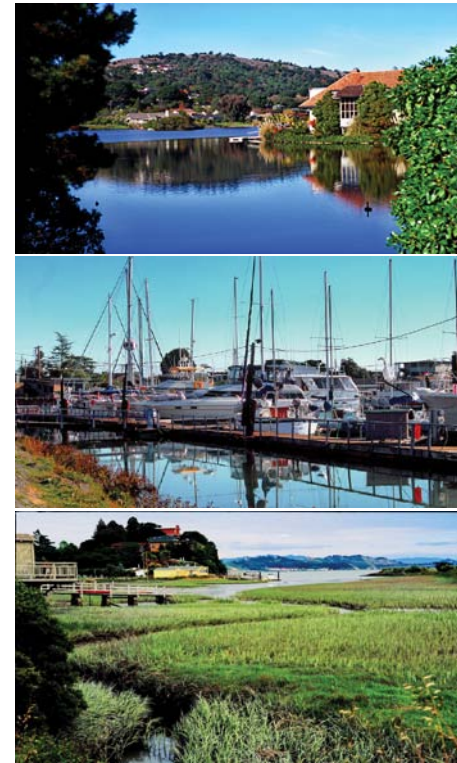
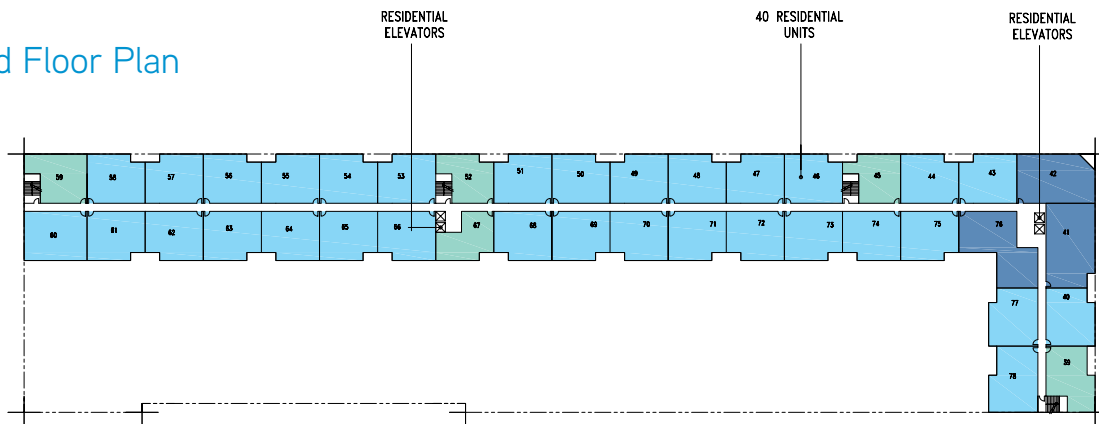
Site Plan



2nd Floor Plan



3rd Floor Plan



Contact Us

FRANK WHEELER
415 288 7816
frank.wheeler@colliers.com

TONY CROSSLEY
415 288 7807
tony.crossley@colliers.com

COLLIERS INTERNATIONAL
50 California Street, Suite 1900
San Francisco, CA 94111
colliers.com

